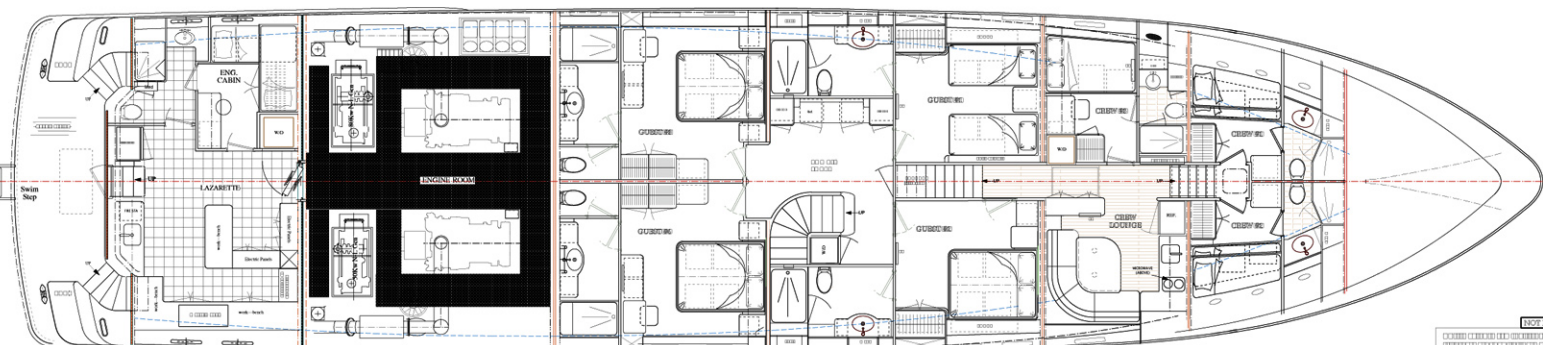
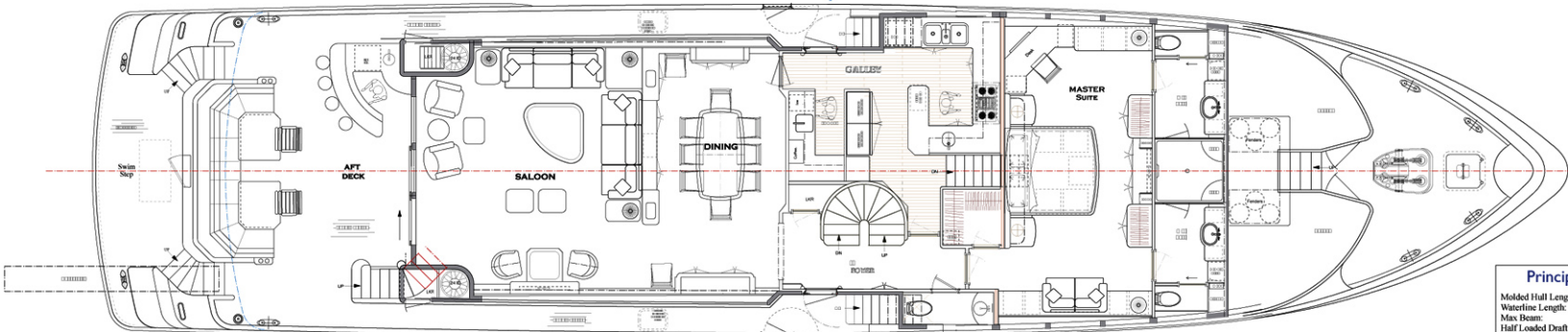
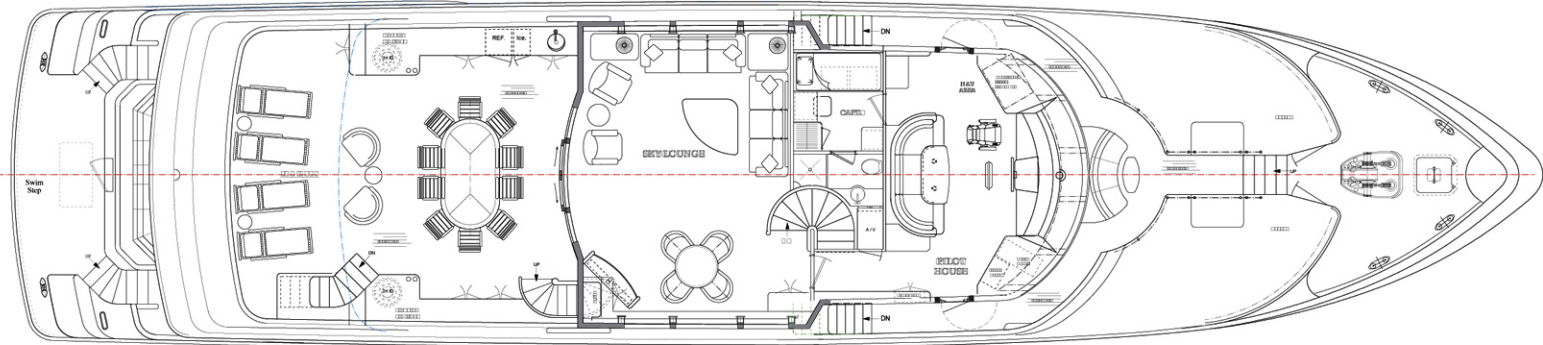
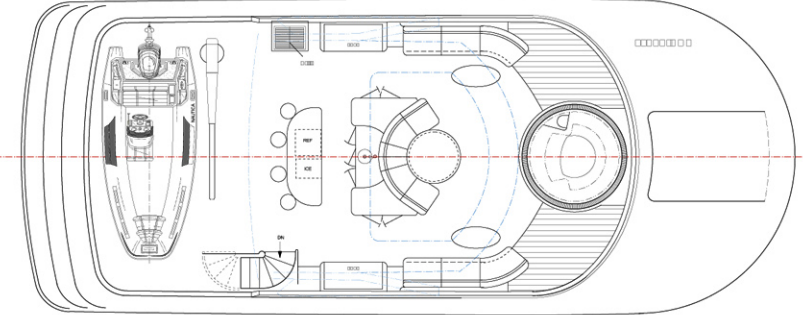


ATTENTION: BUILDER, OWNER AND SUB-CONTRACTORS
 This drawing is the property of SETZER DESIGN GROUP, Inc. It is to be used only for the project and vessel specified. No part of this drawing may be reproduced or transmitted in any form or by any means, electronic or mechanical, including photocopying, recording, or by any information storage and retrieval system, without the prior written permission of SETZER DESIGN GROUP, Inc. The information on this drawing is based on the information provided to the designer. The designer is not responsible for any errors or omissions on this drawing. The information on this drawing is based on the information provided to the designer. The designer is not responsible for any errors or omissions on this drawing. The information on this drawing is based on the information provided to the designer. The designer is not responsible for any errors or omissions on this drawing.

Copyright © SETZER DESIGN GROUP, Inc. 2013
 This drawing is the property of SETZER DESIGN GROUP, Inc. It is to be used only for the project and vessel specified. No part of this drawing may be reproduced or transmitted in any form or by any means, electronic or mechanical, including photocopying, recording, or by any information storage and retrieval system, without the prior written permission of SETZER DESIGN GROUP, Inc. The information on this drawing is based on the information provided to the designer. The designer is not responsible for any errors or omissions on this drawing.



**OUTER REEF
 YACHTS**



Principle Dimensions

Molded Hull Length:	116'-4"
Waterline Length:	101'-5"
Max Beam:	26'-6"
Half Loaded Draft:	6'-4"

NOT FOR CONSTRUCTION PURPOSES

REV. #

1	3.13.17.15.10.21.0	PROVISION
---	--------------------	-----------

SEETZER
 YACHT ARCHITECTS
 596 NEW Waverly Place, Suite 210 Cary, NC 27518 USA
 (919) 859-7014 PH. (919) 859-7015 FAX. WWW.SETZERDESIGN.COM

Outer Reef Yachts
 1520 SE 7th Street / Suite 101
 Fort Lauderdale, FL 33316

318 - 85M - Englewood Yachts
LAYOUTS & SPECIFICATIONS
STUDY

DWG: STUDY PRINT
 DRAWN: WDS
 SCALE: 1/8" = 1'-0"
 DATE: Dec 11 12
 REV: 00